

Lessons from the past for the future

BOSCH, DUTCH GUILD AND MEDIANET VLAANDEREN

Julian Carro
EMEA System Solution Account Director
AUDINATE

Visionary companies push the technology forward, standards keep them pushing

Telegraph 1830s

We get beeps, that's enough to send a message

Bell

Telephone 1870s

We can hear a voice, that's enough

Lucent

Television 1920s

We can see and hear

Data Networks 1920s

We can send instructions to a machine

Nortel

Arpanet 1960s

We can send instructions to other people's machines

VOIP introduced 1990s

VOIP, not on my network!

Cisco

VOIP overtakes analogue and digital handsets in mid 2000s

There have been many AOIP standards...

Cobranet

Ravenna

Mediornet

ADAT

Ethersound

Soundgrid

Livewire

Supermac

QLAN

Dante

Optocore

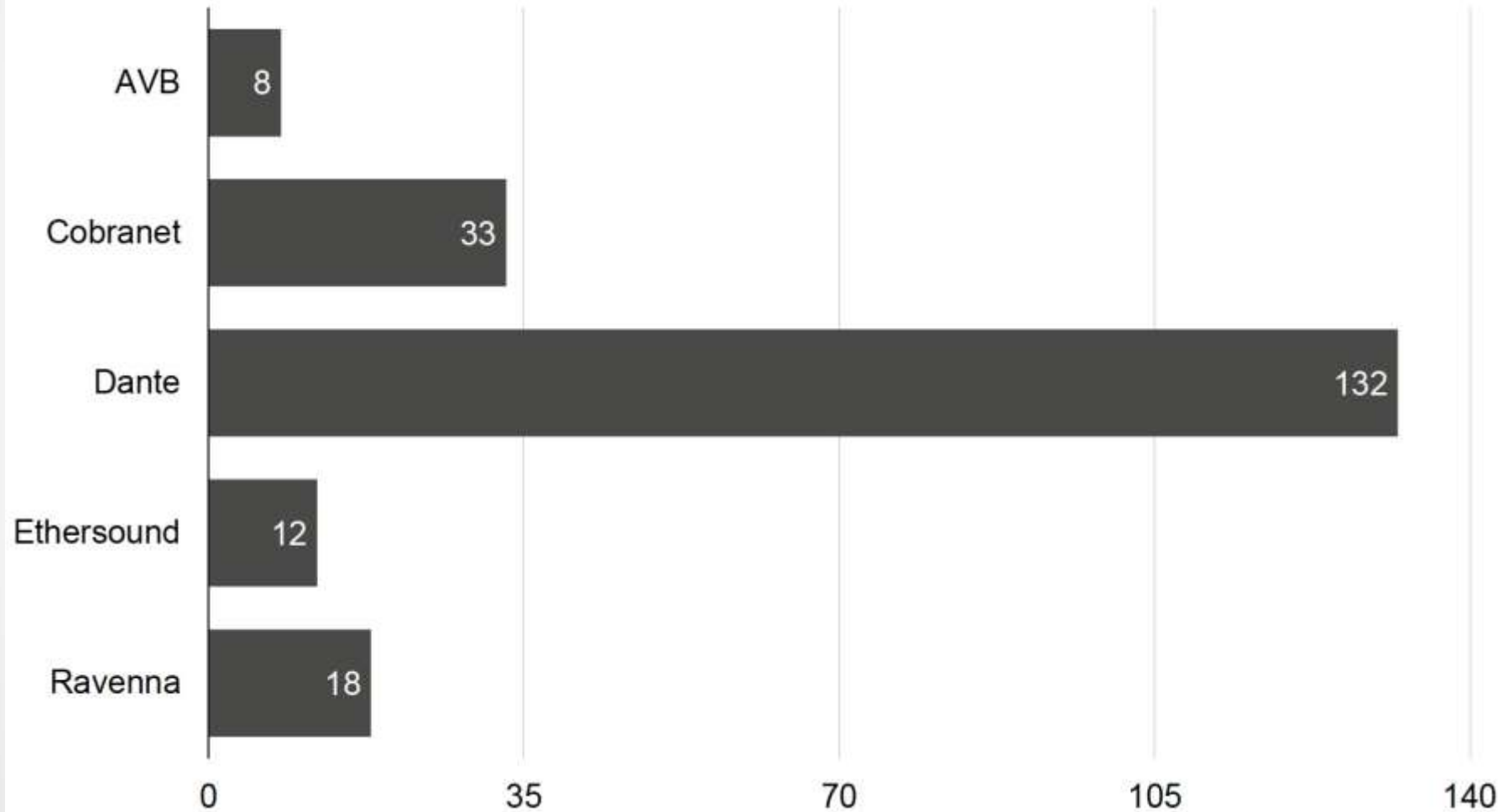
HyperMac

How many can claim the following...

- Tens of thousands of installations
- Standards based architecture, DiffServ, QoS, DHCP, DNS etc.
- Proven connection management and discovery
- Deterministic latency, user selectable
- **AN ENVIABLE ECO SYSTEM**
 - 380 OEM manufacturers provides user choice
 - Over 1200 available products provides user choice
- Dante Just Works!!

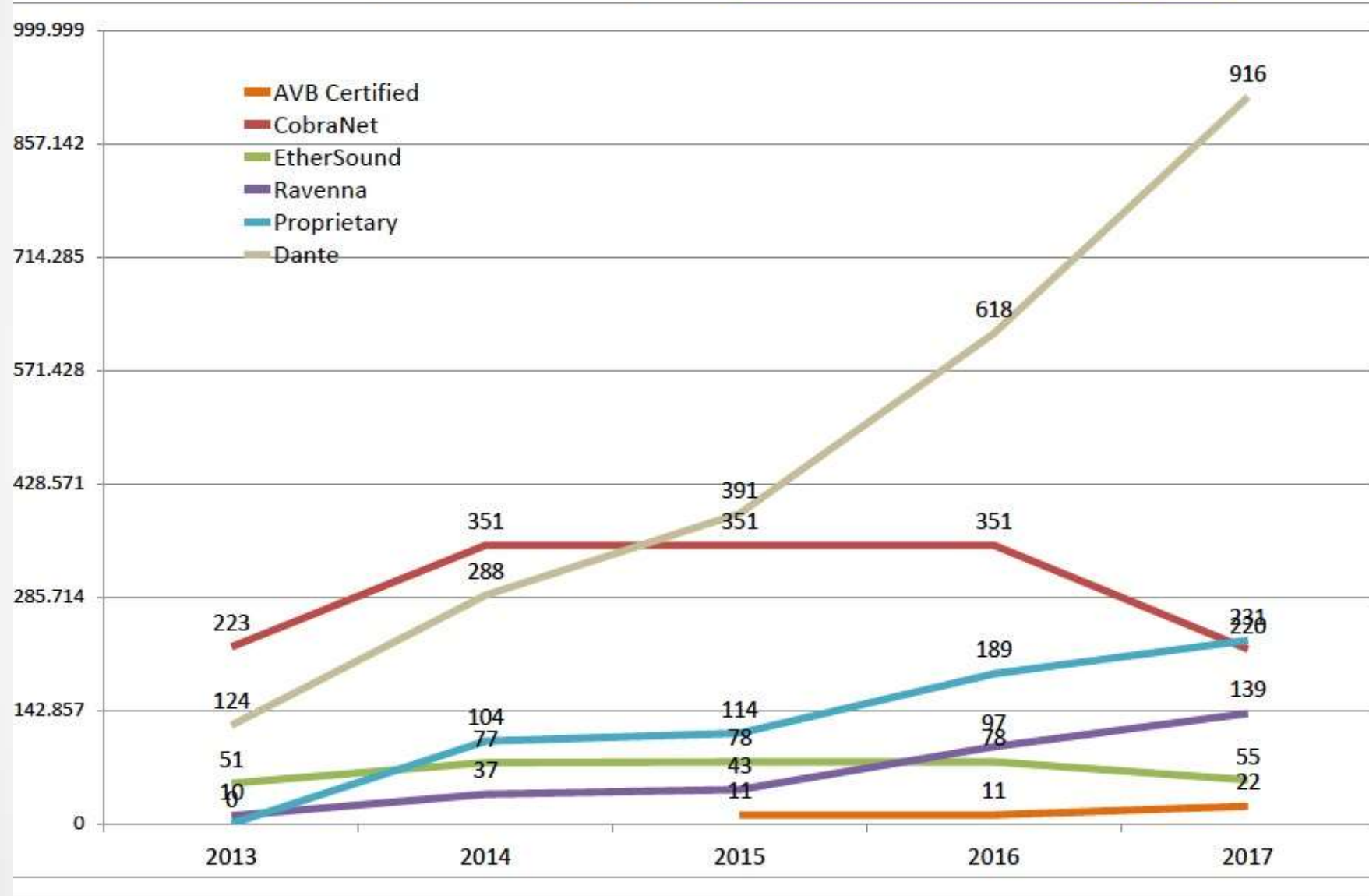
Manufacturer Ecosystem Activity

How many manufacturers shipping for each protocol?

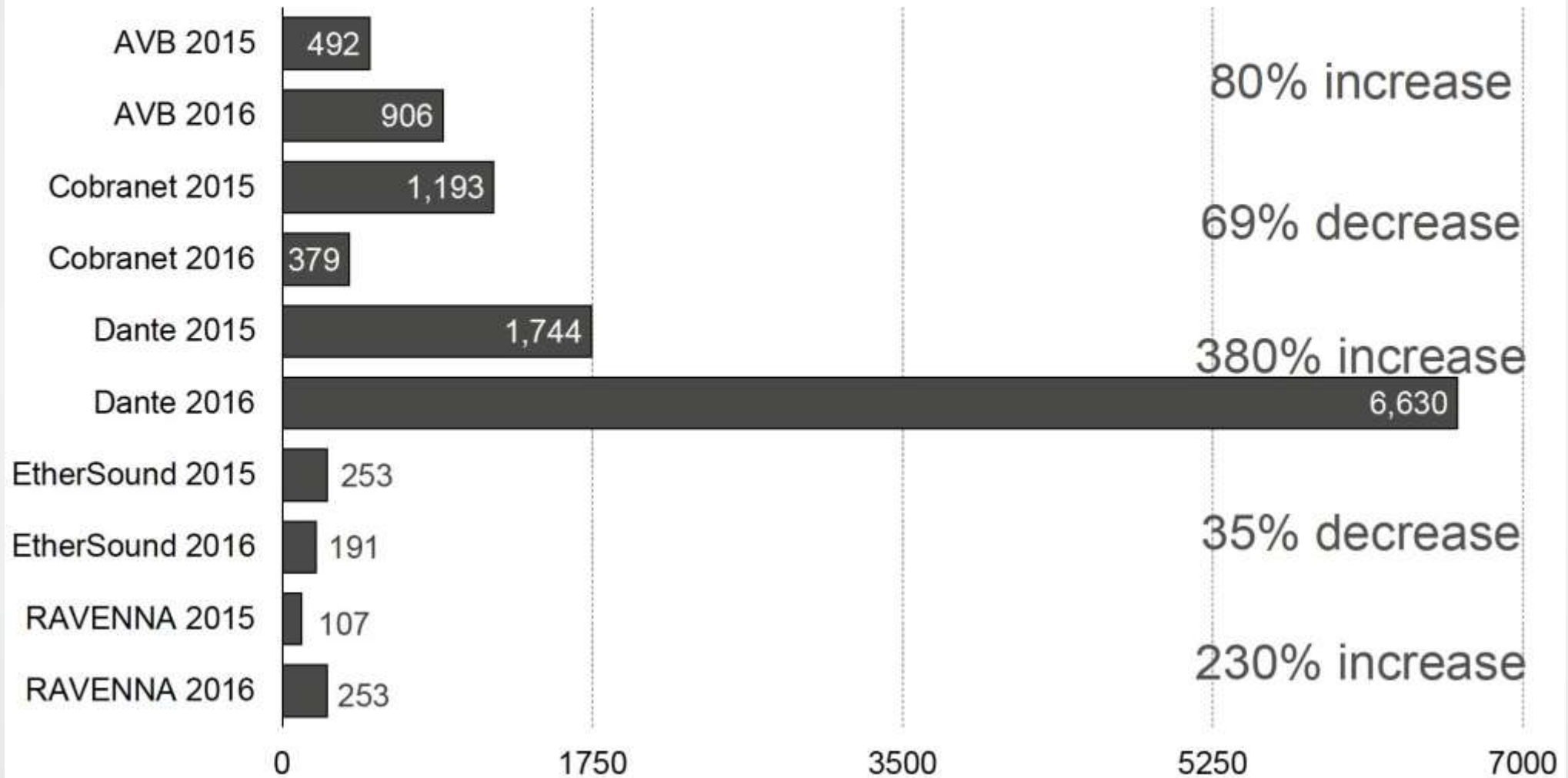


Products

For explanation go to www.rhconsulting.eu

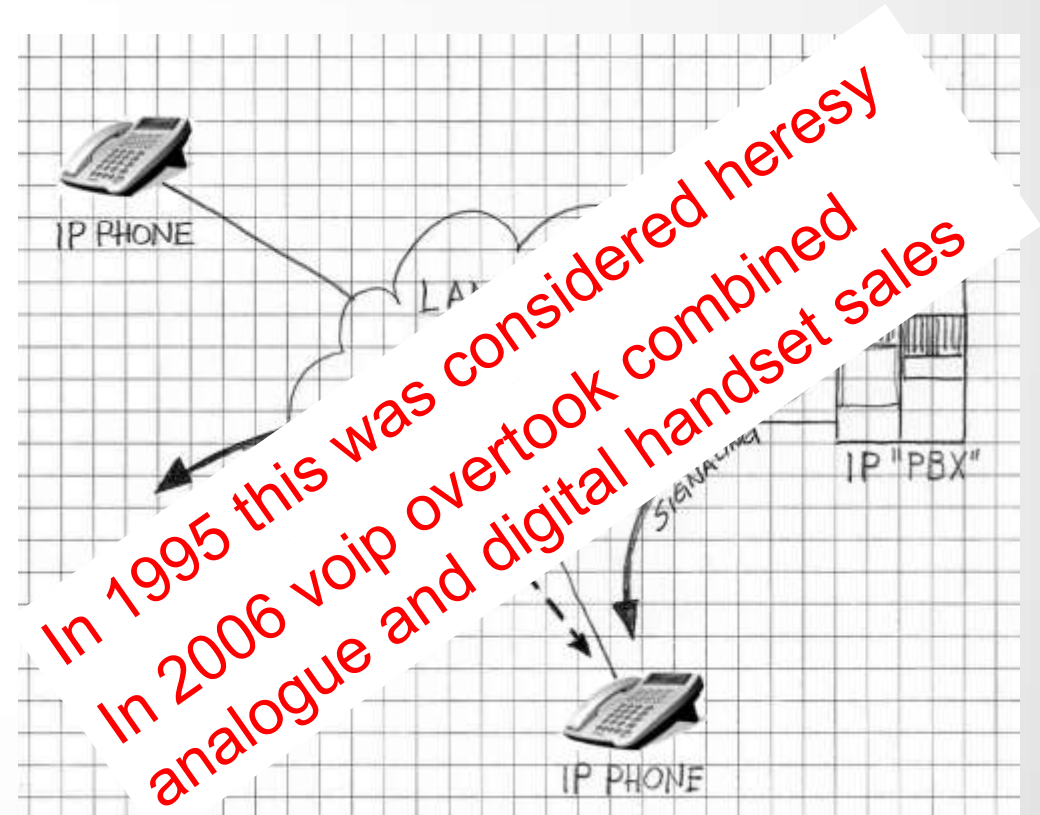


How many projects using each protocol?



Audinate brings you the next step IP Digital Audio Convergence with IT

Same network
Same cables
Same switches
Same concerns about security,
control, monitoring
Same story, a story as old as
time ...



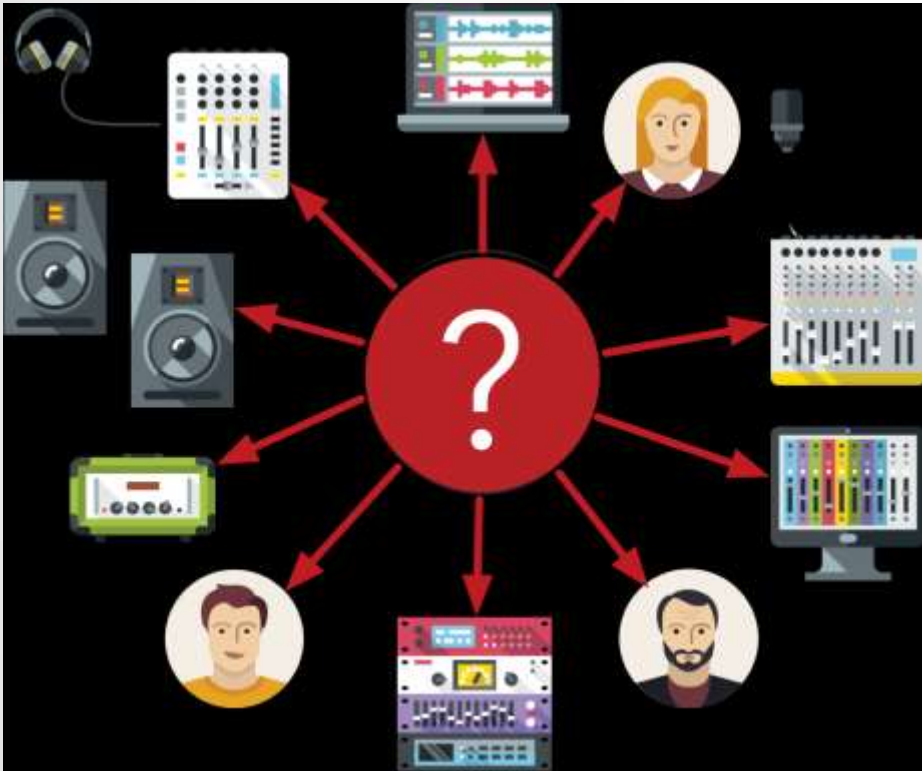
AOIP is established

multi track, digital, no hum, no hiss, IP, easier installs, lighter cable, longer runs, fewer cables, easier patching, no orphan cables, enhanced workflow, etc etc etc

Now, if only AV and IT departments could find a way to work together



AV networks bring IT-level concerns



How can I make sure that only authorized changes are made?

How can I tell who has made changes to my system? What did they do?

How can I centralise Dante AV system management in my site?

How can I quickly tell if the system is working correctly?

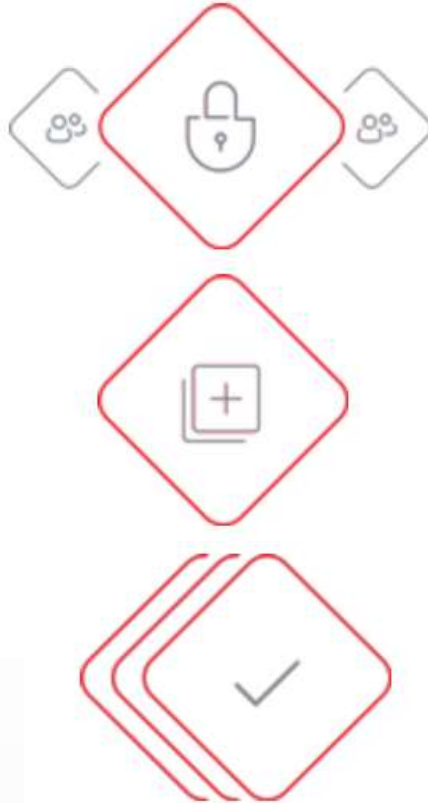
DANTE DOMAIN MANAGER

IT issues resolved

SECURITY

SCALABILITY

VISIBILITY



CONTROL

FLEXIBILITY

ACCOUNTABILTY

Introducing

DANTE DOMAIN MANAGER

SECURITY

- Usernames/passwords identify users
- Roles control access to the system

SCALABILITY

- Create Dante systems spanning campus networks
- Group Dante devices into logical managed systems

VISIBILITY

- Centralise Dante system management
- Monitor system status and changes from anywhere

Security and Control

USER AUTHENTICATION

- Username/password login in Dante Controller
- Optional integration with Active Directory

USER ROLES

- Grant access only where needed, control changes
- Four built-in privilege levels

DOMAIN MANAGEMENT

- Per-domain user privileges are supported
- Domains can be isolated from each other

Scalability and Flexibility

ROUTED CAMPUS NETWORKS

- Deploy Dante transparently across network subnets
- Group devices into Dante Domains regardless of network subnet

LARGE SYSTEMS

- Divide large systems into logical sub-domains
- Domains provide performance enhancements

SUPPORT NETWORKS AS-IS

- Minimize or eliminate IT/network changes
- No need have Dante devices in a single subnet

Visibility and Accountability

CHECK SYSTEM STATUS INSTANTLY

- Centralized status logging & reporting
- User-configurable dashboard shows key information

AUDIT REPORTS

- Complete, time-stamped log of changes & events
- Know who did what, when

REMOTE ALERTS

- Email notifications
- Integrate with SNMP network management tools

Seamless integration with IT

VIRTUAL SERVER SUPPORT

- Run Dante Domain Manager on virtual machines in data centers

ACTIVE DIRECTORY & LDAP

- Connect Dante Domain Manager to your Active Directory or LDAP server for user management

HIGH AVAILABILITY

- Support for redundant DDM servers in one site

COMMON TOOLS & METHODS

- SNMP Support, Email integration

Easy to use

BROWSER-BASED MANAGEMENT GUI

- Use with popular browsers and devices
- Desktops, laptops, tablets & phones

INTUITIVE NAVIGATION

- Manage domains, devices, users & roles in a single window
- Clear and easy to understand

SIMPLE DEVICE DISCOVERY & ENROLLMENT

- Simple and/or automated Dante device discovery
- Simple, configurable, domain enrollment

What is Dante Domain Manager?

- ✓ Dante Domain Manager is server-based software that manages your Dante network

- ✓ Runs on Windows or Linux, desktop and server platforms, or virtual environments

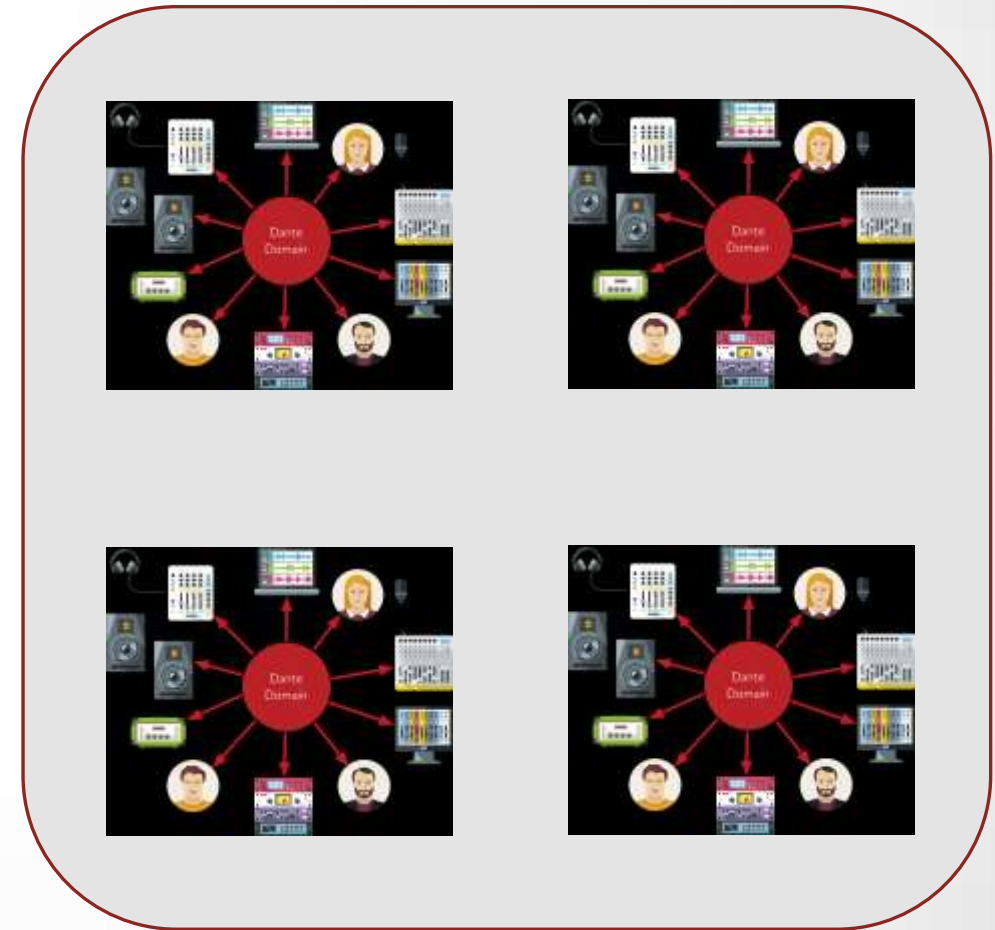
- ✓ Managed with a web browser from computer, tablet or phone

- ✓ Not in the audio path – audio continues even if the server has failed or is unreachable

About Dante Domains

- ✓ A Dante Domain is a logical group of devices and users with access controls
- ✓ A Dante Domain may be used to represent a location, building, zone, ...
- ✓ Many Dante Domains can share one underlying network
- ✓ A Dante Domain may span IP subnets
- ✓ A Dante Domain can be isolated

Your network



What can I do with the DDM?

**AV
Managers**



✓ Easily trouble-shoot AV System problems, identify root causes and take corrective actions quickly

**IT
Administrators**



✓ Use Directory service to manage access to AV systems
✓ Prevent unauthorized changes to AV systems
✓ Log all Dante activity

**System
Integrators,
AV Consultants**



✓ Divide systems into manageable sub-domains
✓ Deploy Dante in campus routed IP networks

**AV System
Owners**



✓ Get notified of AV System issues so they can be actioned immediately

A Campus Exam



WASSAMATTA UNIVERSITY WHITE MOUNTAINS, MA



Bullwinkle
Dormitory

Rocky J.
Squirrel
Lecture Hall

Wossamatta
Stadium

- Dashboard
- Domains**
- Devices
- Users
- Roles
- Settings
- Audit Log

Search

Wossamatta Stadium

NO DOMAINS SELECTED

Let us review the existing domain

- Dashboard
- Domains**
- Devices
- Users
- Roles
- Settings
- Audit Log

Search

Wossamatta Stadium

Domain Details

Wossamatta Stadium

DEVICES 3 **ENROLL DEVICES** **UNENROLL DEVICES**

Clock Synchronization

CLOCKING SETTINGS

GRAND MASTER Not Available

Create the new domain

NAME	ENROLL STATE	CONNECTIVITY
BSS-BLU	ENROLLED	ONLINE
Yamaha-CL5	ENROLLED	ONLINE
Powersoft-X	ENROLLED	ONLINE

Enroll By IP Address Status

CLEAR ALL

IP ADDRESS	STATUS	ACTIONS
------------	--------	---------

ADD DOMAIN DELETE DOMAIN

Dashboard ▲ 1 Search

- Domains
 - Wossamatta Stadium
 - Lecture Hall and Dormitory
- Devices
- Users
- Roles
- Settings
- Audit Log

Domain Details

Lecture Hall and Dormitory

DEVICES 0 ENROLL DEVICES UNENROLL DEVICES

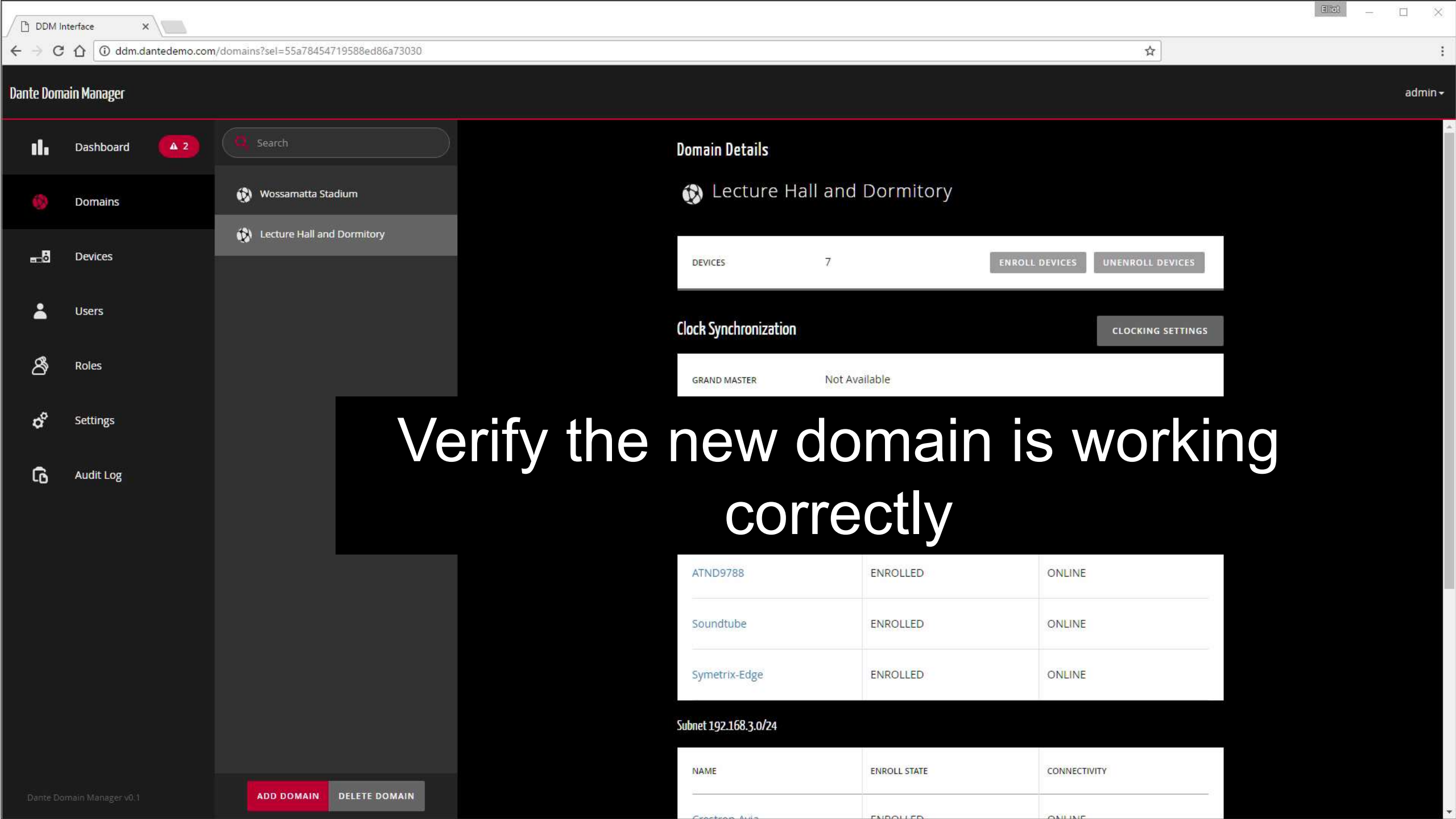
Clock Synchronization

CLOCKING SETTINGS

GRAND MASTER Not Available

Enroll products into the new domain

IP ADDRESS	STATUS	ACTIONS
------------	--------	---------



- Dashboard 2
- Domains
- Devices
- Users
- Roles
- Settings
- Audit Log

Search

- Wossamatta Stadium
- Lecture Hall and Dormitory

Domain Details

Lecture Hall and Dormitory

DEVICES 7 ENROLL DEVICES UNENROLL DEVICES

Clock Synchronization

CLOCKING SETTINGS

GRAND MASTER Not Available

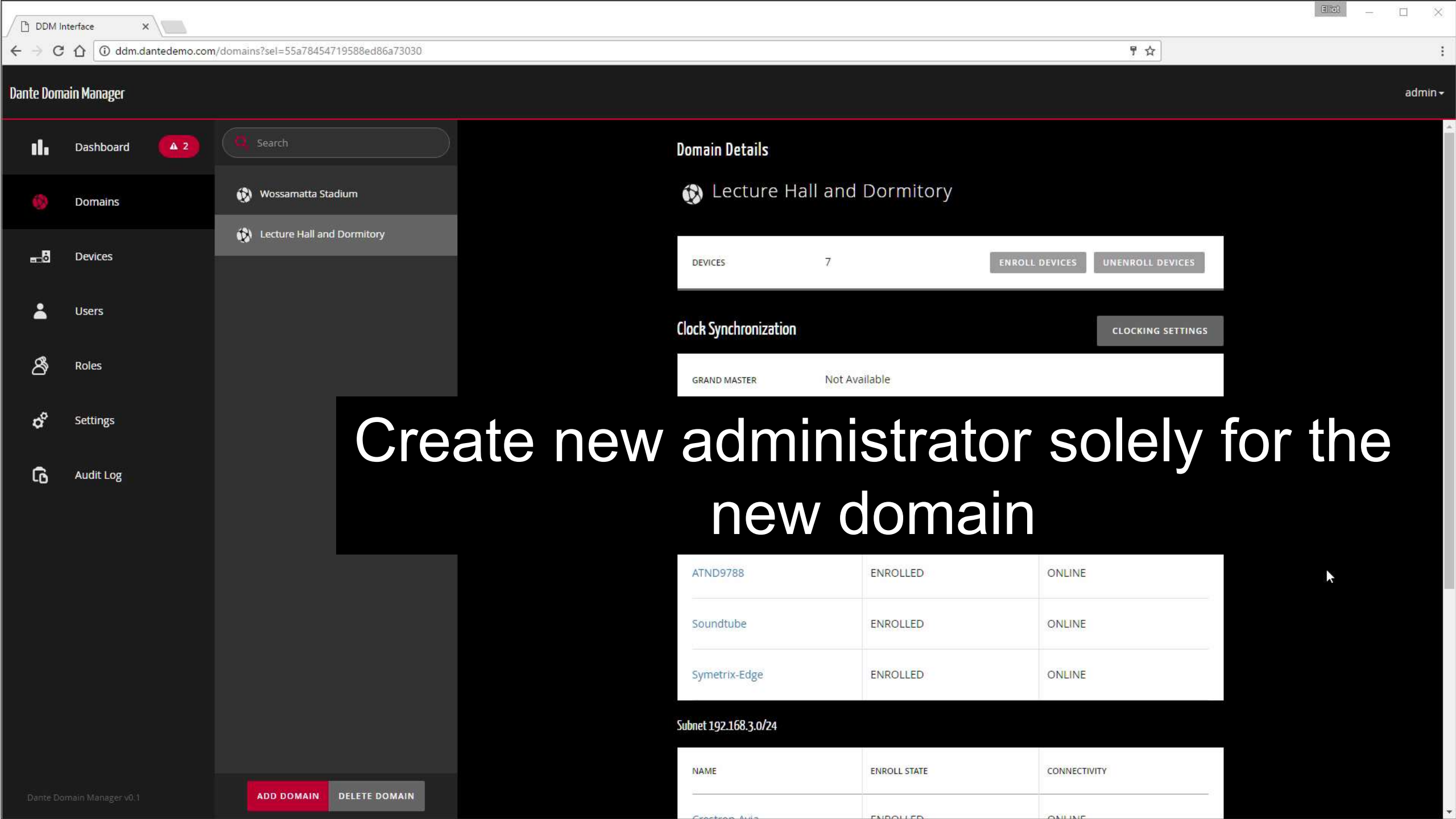
Verify the new domain is working correctly

ATND9788	ENROLLED	ONLINE
Soundtube	ENROLLED	ONLINE
Symetrix-Edge	ENROLLED	ONLINE

Subnet 192.168.3.0/24

NAME	ENROLL STATE	CONNECTIVITY
Creston-Avia	ENROLLED	ONLINE

ADD DOMAIN DELETE DOMAIN



- Dashboard 2
- Domains
- Devices
- Users
- Roles
- Settings
- Audit Log

Search

- Wossamatta Stadium
- Lecture Hall and Dormitory

Domain Details

Lecture Hall and Dormitory

DEVICES 7 ENROLL DEVICES UNENROLL DEVICES

Clock Synchronization

CLOCKING SETTINGS

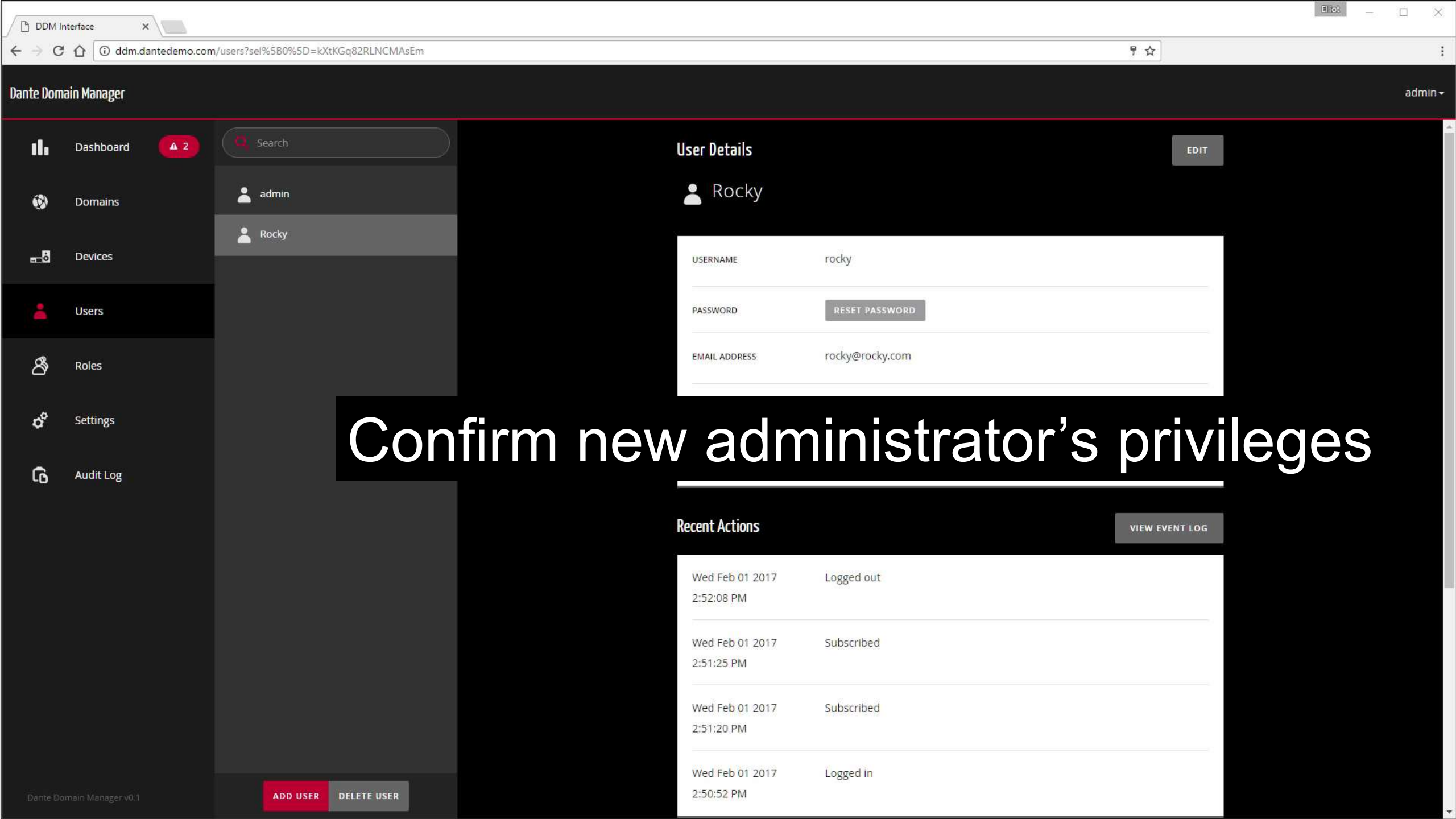
GRAND MASTER Not Available

Create new administrator solely for the new domain

ATND9788	ENROLLED	ONLINE
Soundtube	ENROLLED	ONLINE
Symetrix-Edge	ENROLLED	ONLINE

Subnet 192.168.3.0/24

NAME	ENROLL STATE	CONNECTIVITY
Creston-Avia	ENROLLED	ONLINE



Confirm new administrator's privileges

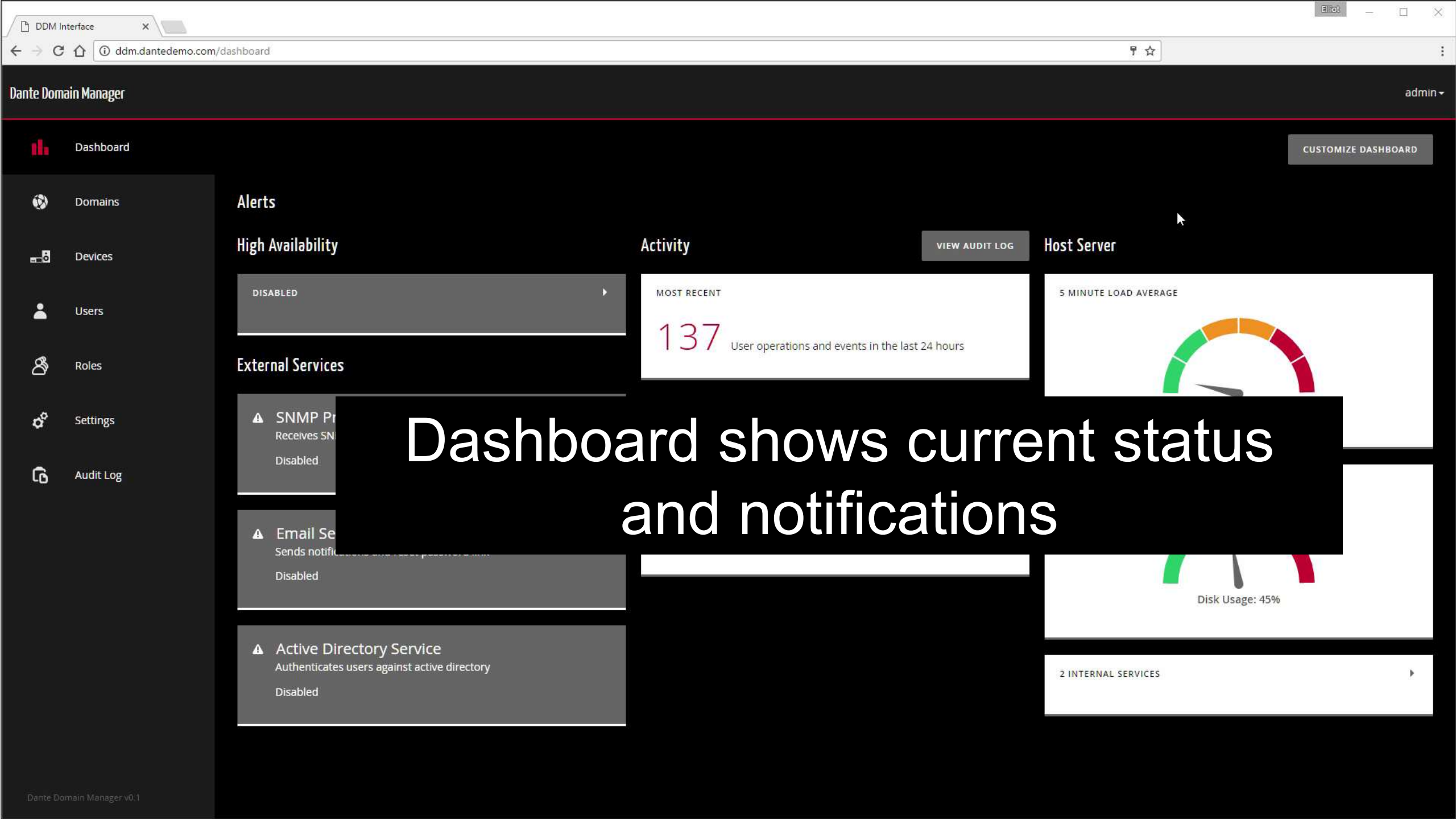
User Details

Rocky

USERNAME	rocky
PASSWORD	<input type="password"/> <input type="button" value="RESET PASSWORD"/>
EMAIL ADDRESS	rocky@rocky.com

Recent Actions

Wed Feb 01 2017 2:52:08 PM	Logged out
Wed Feb 01 2017 2:51:25 PM	Subscribed
Wed Feb 01 2017 2:51:20 PM	Subscribed
Wed Feb 01 2017 2:50:52 PM	Logged in



Dashboard

CUSTOMIZE DASHBOARD

Domains

Devices

Users

Roles

Settings

Audit Log

Alerts

High Availability

DISABLED

External Services

SNMP Protocol
Receives SNMP traps
Disabled

Email Service
Sends notifications
Disabled

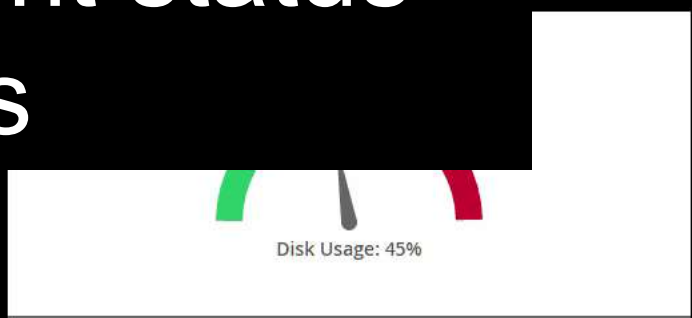
Active Directory Service
Authenticates users against active directory
Disabled

Activity

VIEW AUDIT LOG

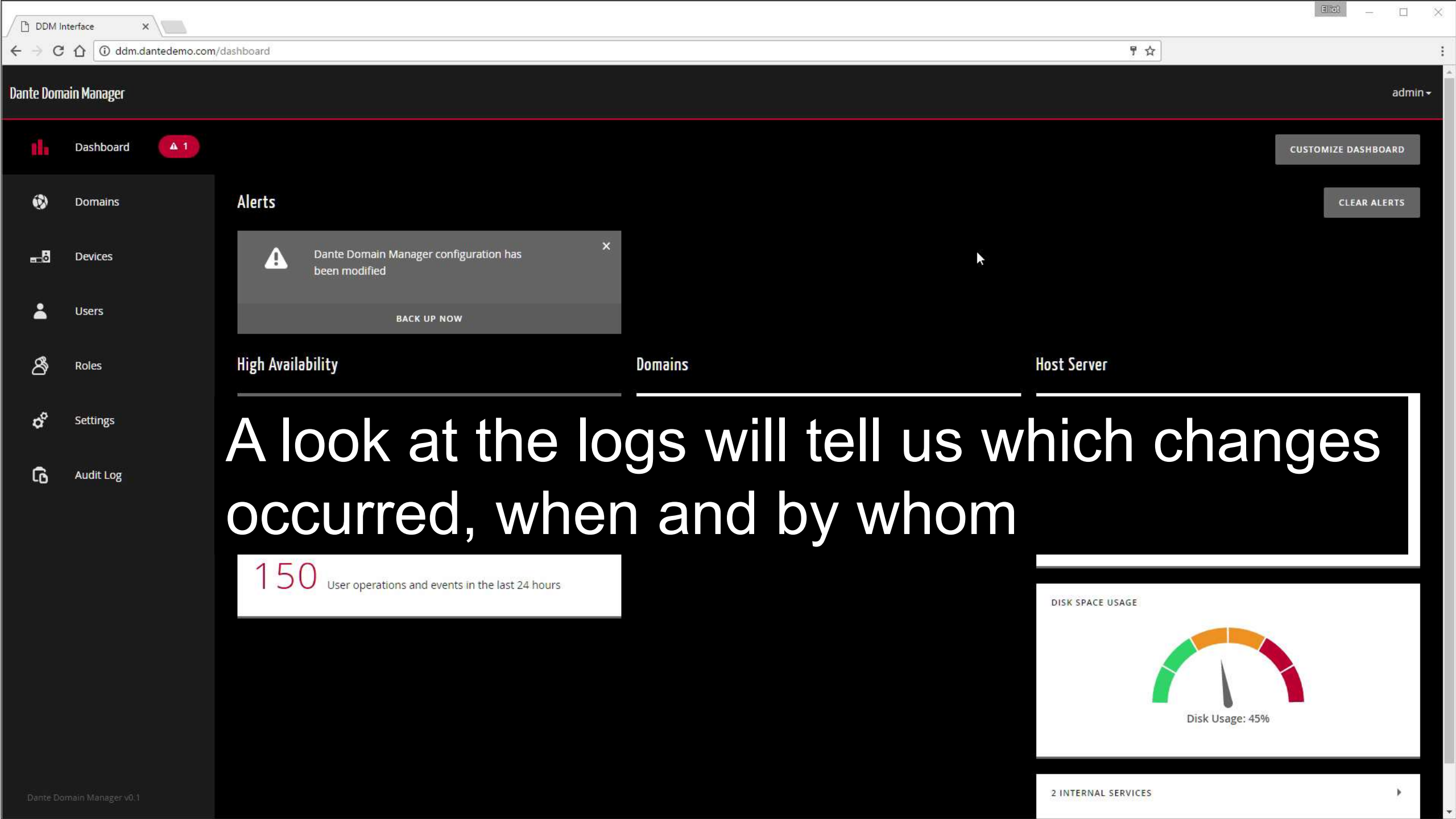
MOST RECENT
137
User operations and events in the last 24 hours

Host Server



2 INTERNAL SERVICES

Dashboard shows current status and notifications



Dashboard 1

Domains

Devices

Users

Roles

Settings

Audit Log

Alerts

⚠
Dante Domain Manager configuration has been modified
✕

BACK UP NOW

CUSTOMIZE DASHBOARD

CLEAR ALERTS

High Availability

Domains

Host Server

A look at the logs will tell us which changes occurred, when and by whom

150
User operations and events in the last 24 hours

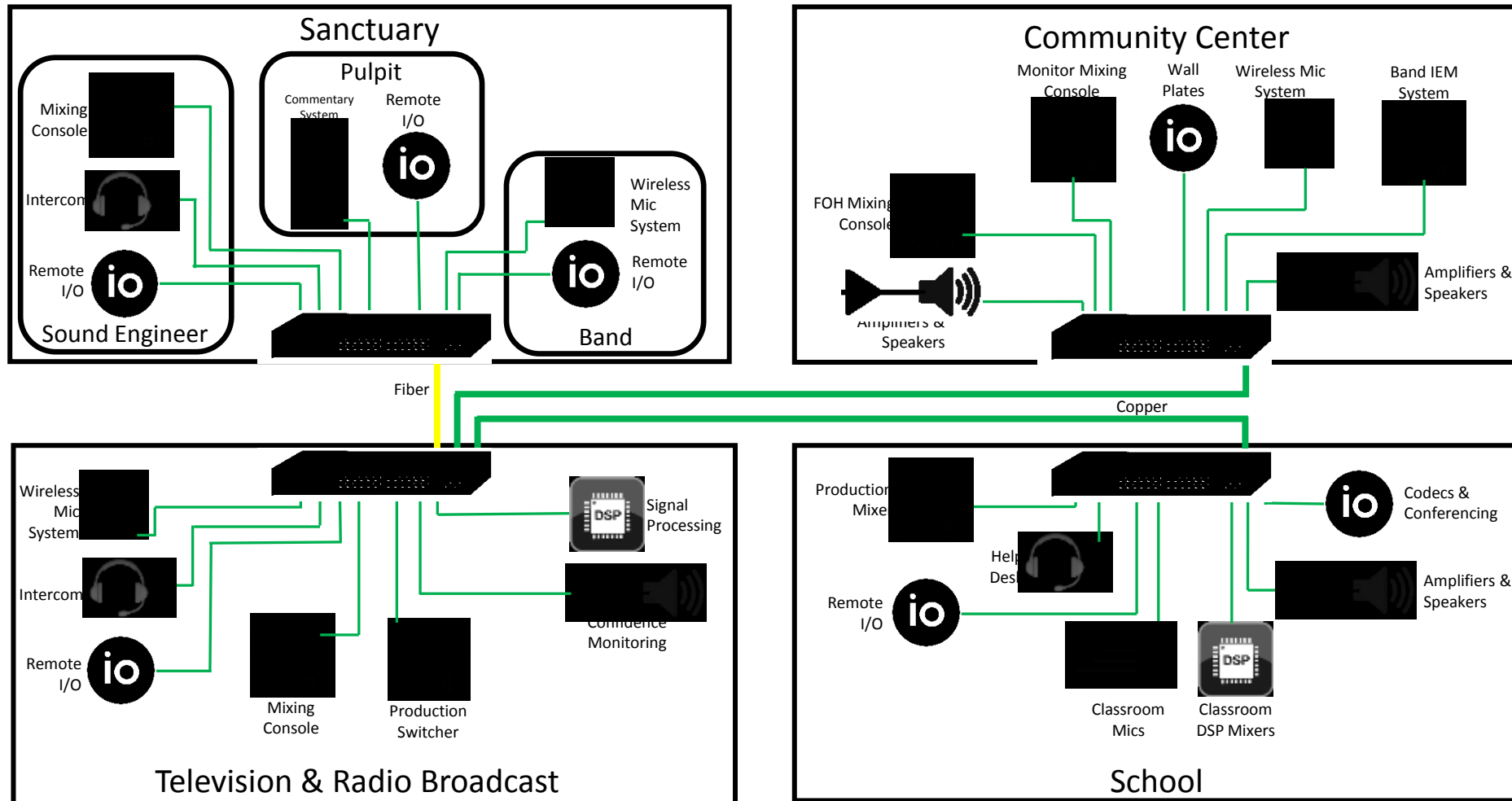
DISK SPACE USAGE



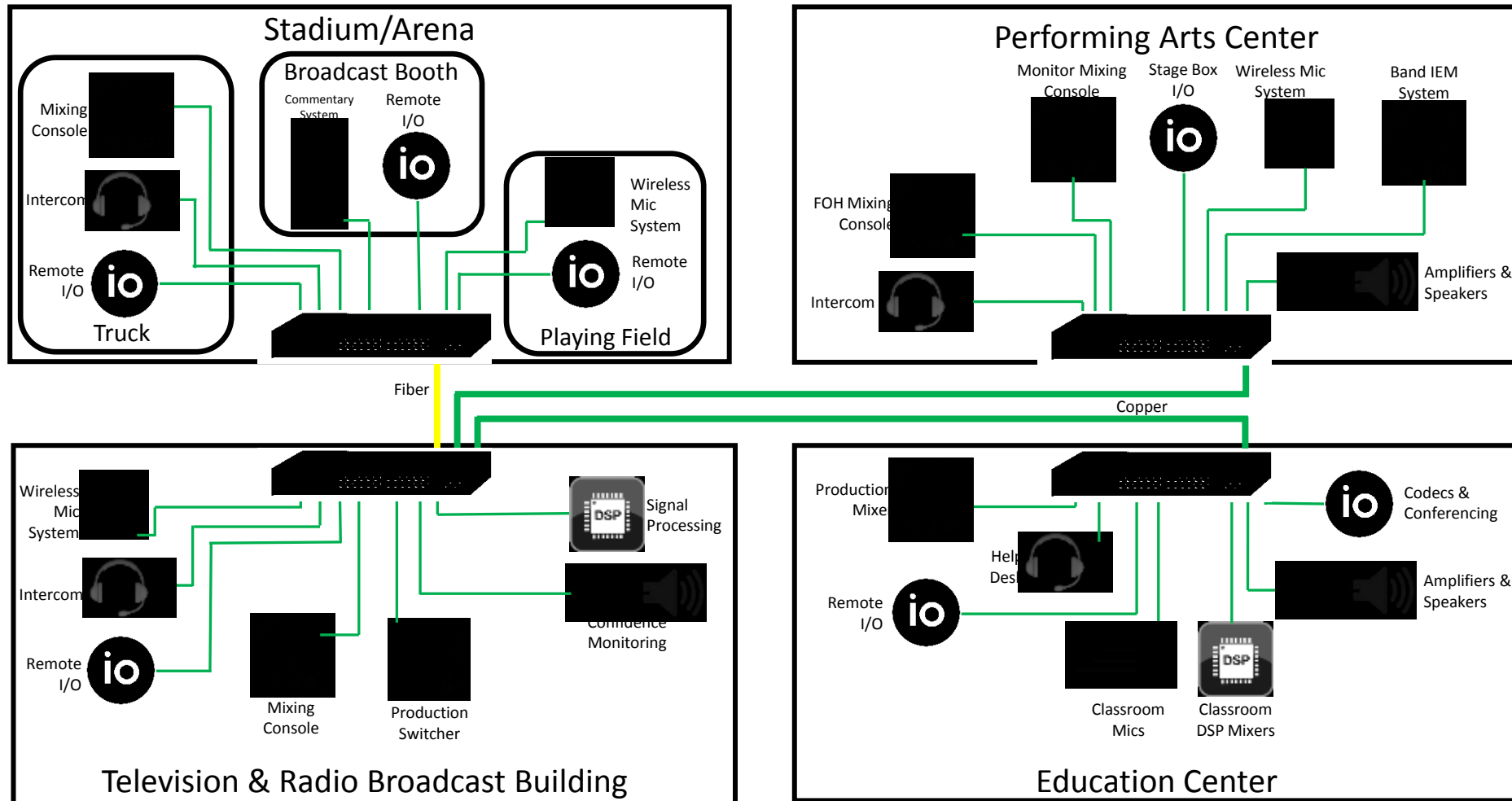
Disk Usage: 45%

2 INTERNAL SERVICES

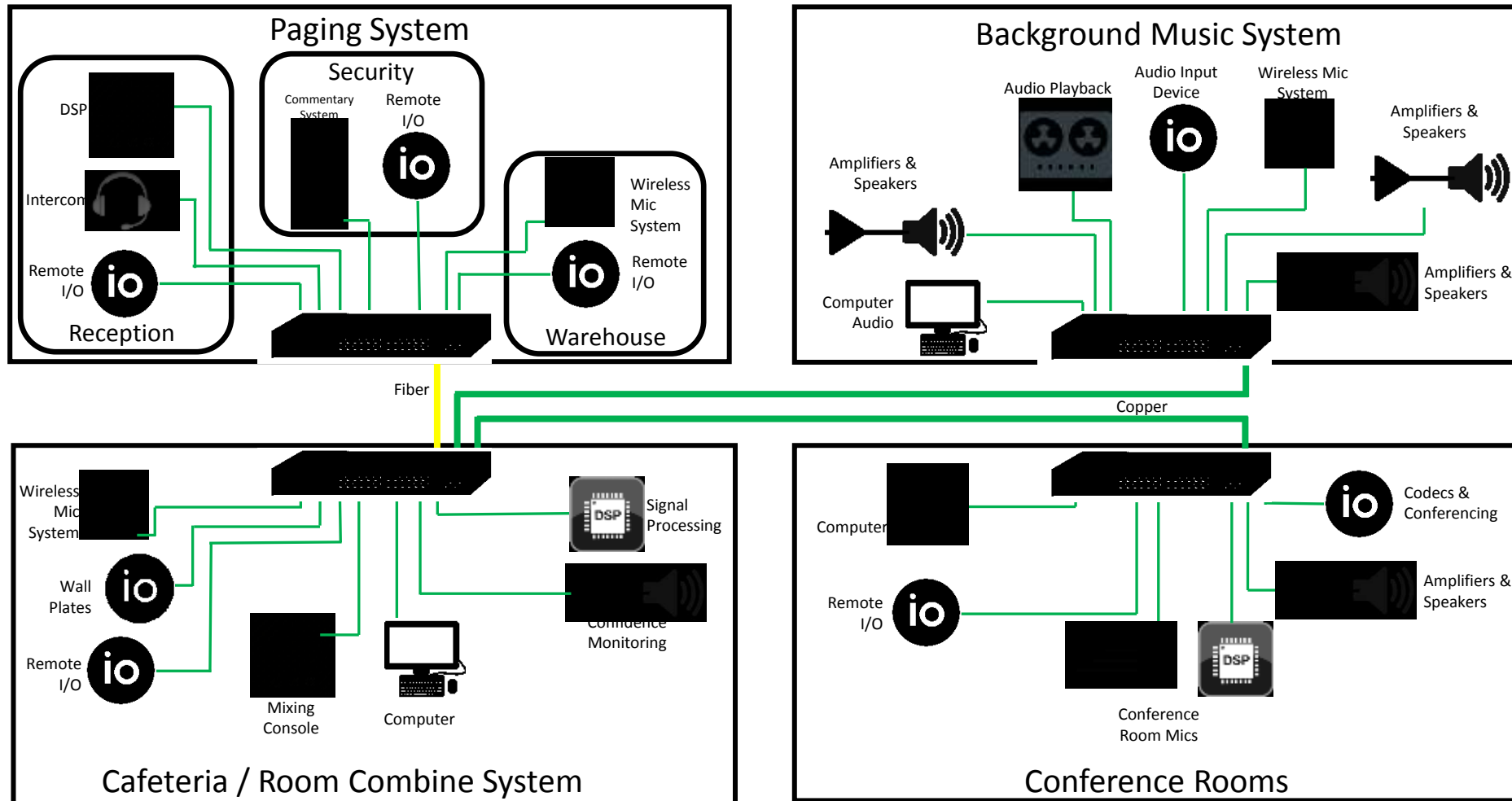
USE CASE: HOUSE OF WORSHIP



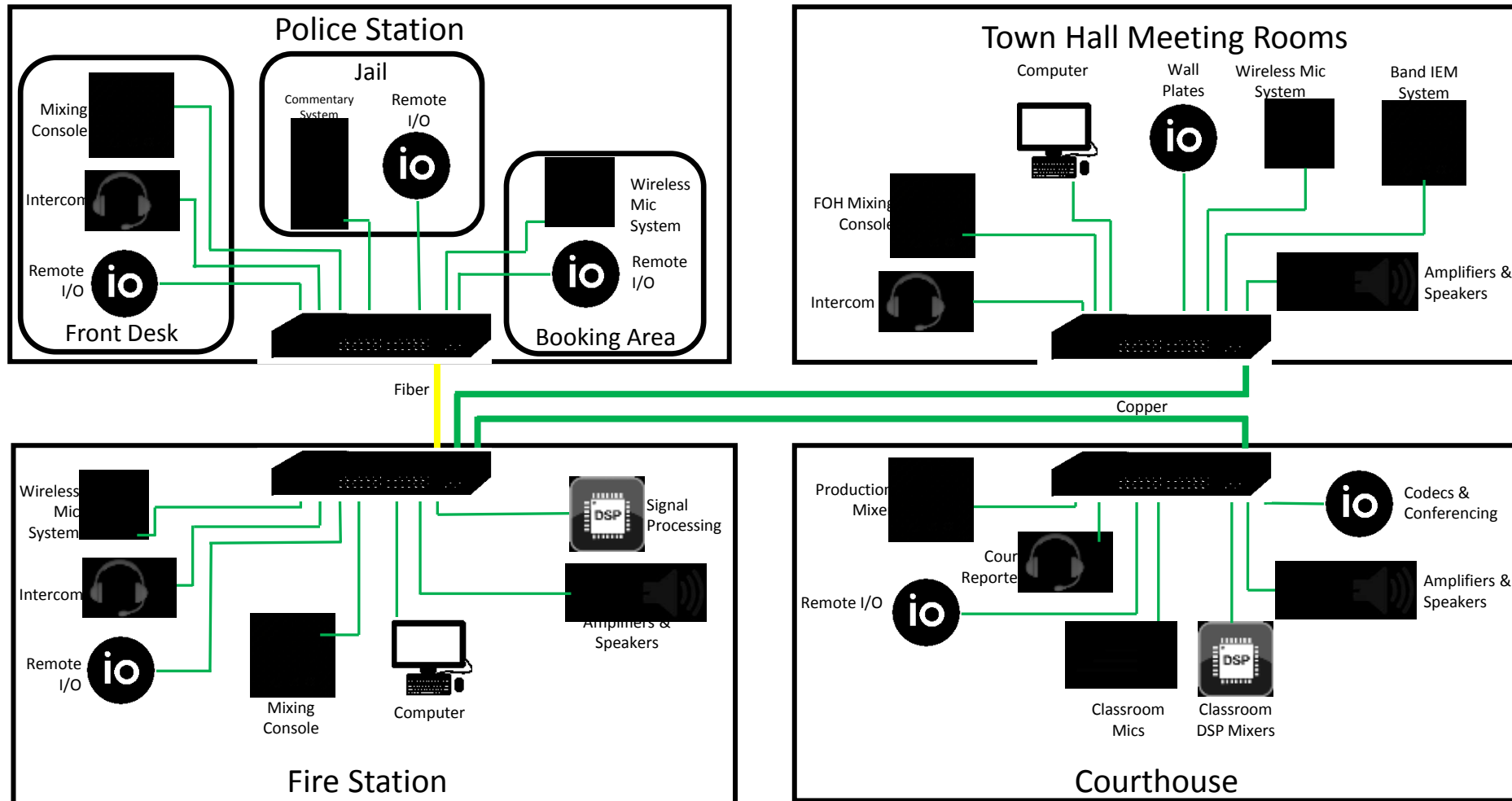
USE CASE: HIGHER EDUCATION



USE CASE: CORPORATE



USE CASE: GOVERNMENT



USE CASE: GOVERNMENT



So in summary, Dante Domain Manager

Adds greater security to the Dante audio environment

Makes it easy to integrate into IT

Facilitates scalability and administration

Logs all activity in the Dante audio environment for troubleshooting